

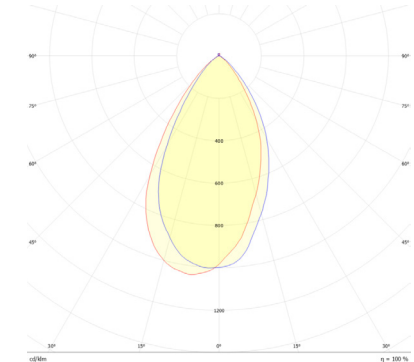
TECHNICAL DATA SPOTS

LUX GLENDER - SPOTS

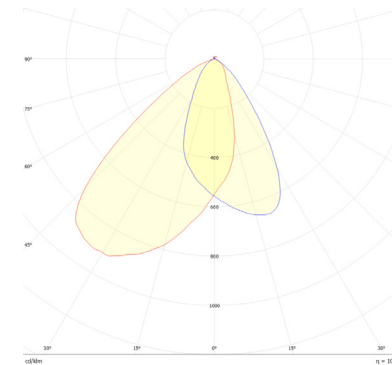
LED Spot LG 18x1 sym/asym

LED Spot LG 18x1 sym/asym

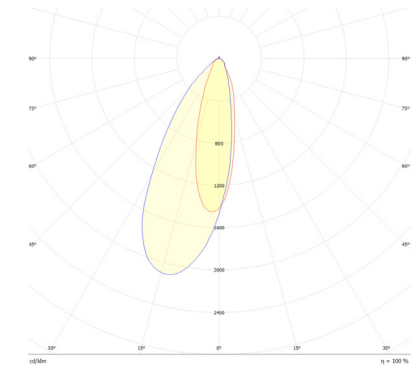
Material:	1.4401/04 - V4A
Dimensions:	M18 x H26 mm
Hole in tube:	M18 x 1 mm
Voltage:	24 VDC
Wattage:	1,2W
CRI _≥	80
Protection rating	IP 67
Beam angle:	A001218 - symmetrical 55° A001219 - asymmetrical 55° A001220 - asymmetrical 40x20°
Cable:	200 mm cable (+red / -black)
For handrail:	Ø 38~42,4 mm
Required wall thickness:	1.5-2 mm
Thread T:	M18 x 1,0 mm
For handrail:	Ø 42,4~100 mm
Required wall thickness:	1.5-6 mm
Thread T:	M18 x 1,0 mm



polar diagram:
A001218 - LG18x1 - 55° sym.



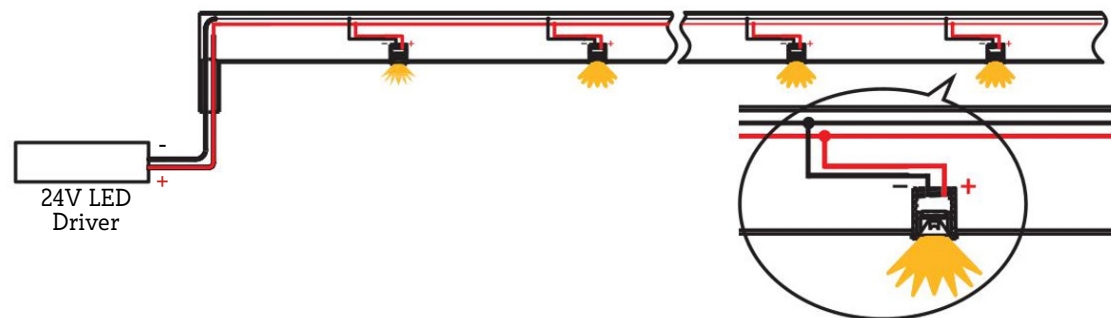
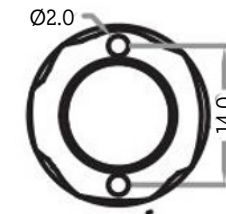
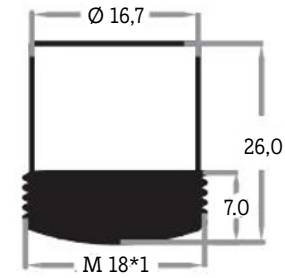
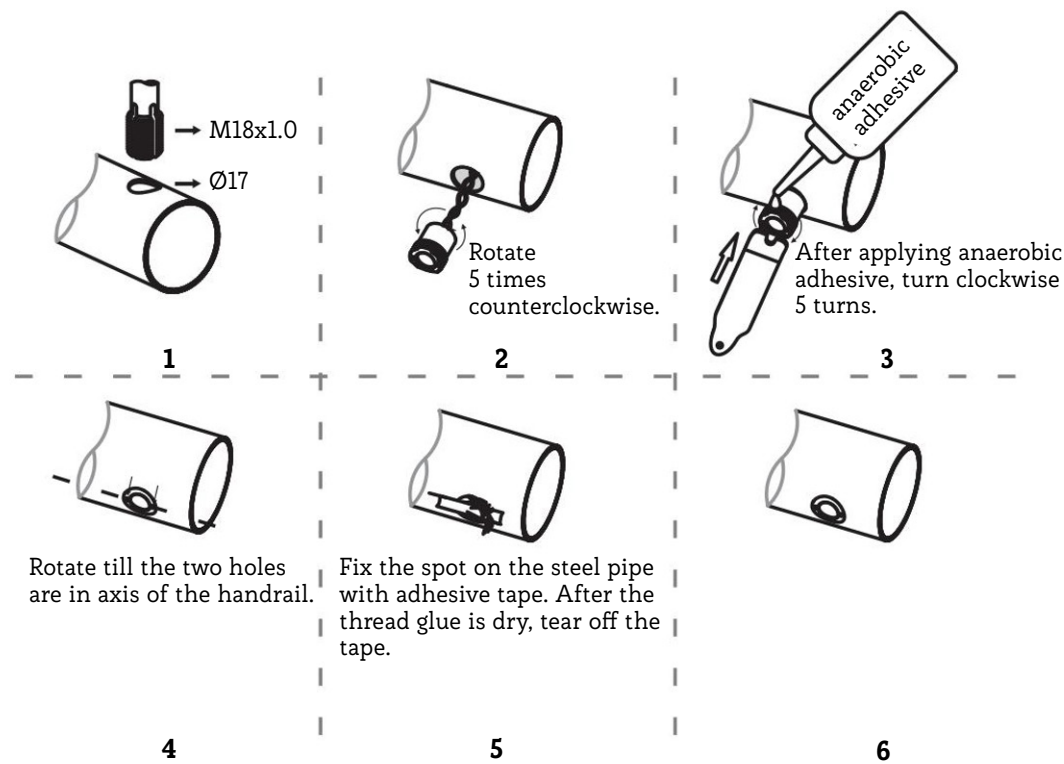
polar diagram:
A001219 - LG18x1 - 55° asym.



polar diagram:
A001220 - LG18x1 - 40x20° asym.

LUX GLENDER - SPOTS

LED spot LG 18x1

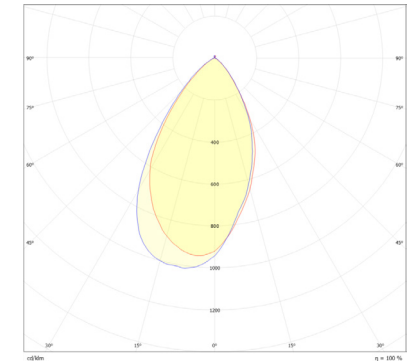


LUX GLENDER - SPOTS

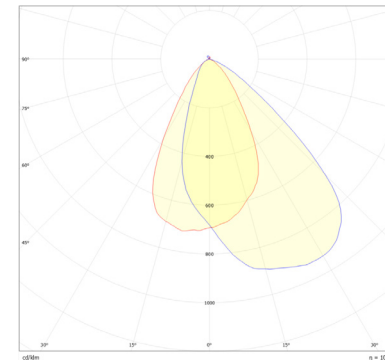
LED Spot LG 20x1 sym/asym

LED Spot LG 20x1 sym/asym

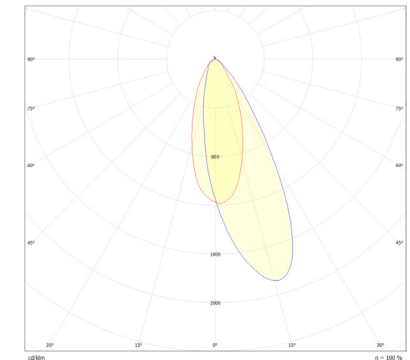
Material:	1.4401/04 - V4A		
Dimensions:	Ø 20 x H26/30mm		
Hole in tube:	Ø 20 mm		
Voltage:	24 VDC		
Wattage:	1,2W		
CRI _≥	80		
Protection rating:	IP 67		
Beam angle:	A001221 - symmetrical 55° A001222 - asymmetrical 55° A001223 - asymmetrical 40x20°		
Cable:	200 mm cable (+red / -black)		
For handrail:	42,4 mm	Ø 48,3	Ø 60,3
Required wall thickness:	2 mm	3 mm	1,5 mm
Hole diameter:	Ø 20 mm		



polar diagram:
A001221 - LG20x1 - 55° sym.



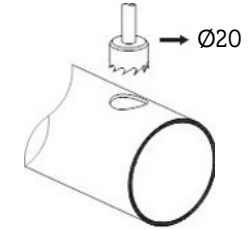
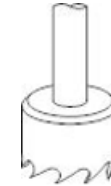
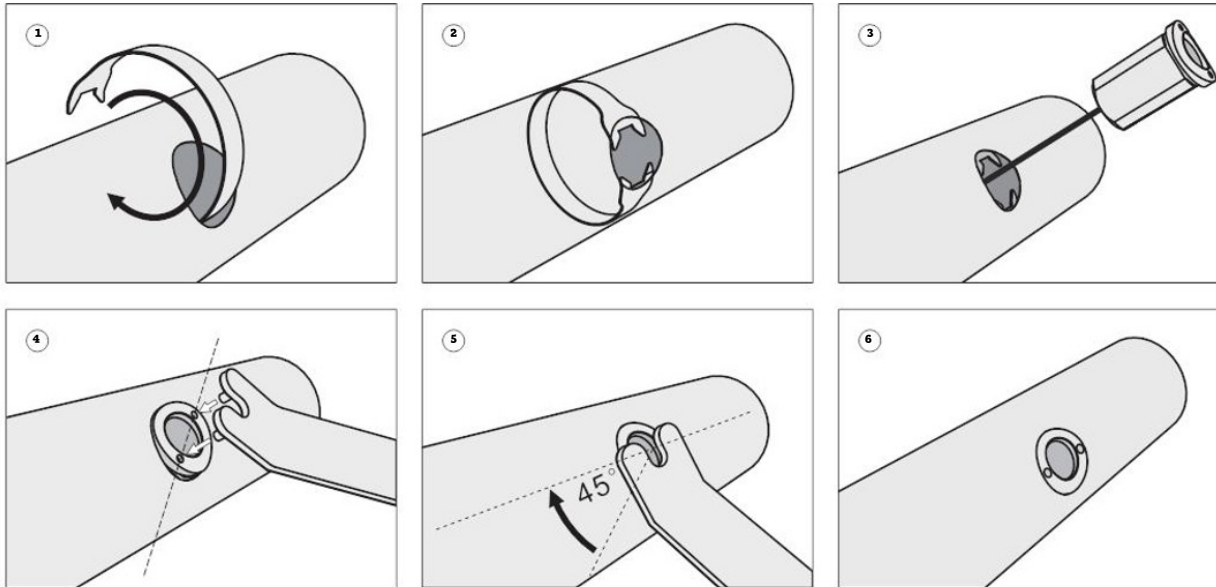
polar diagram:
A001222 - LG20x1 - 55° asym.



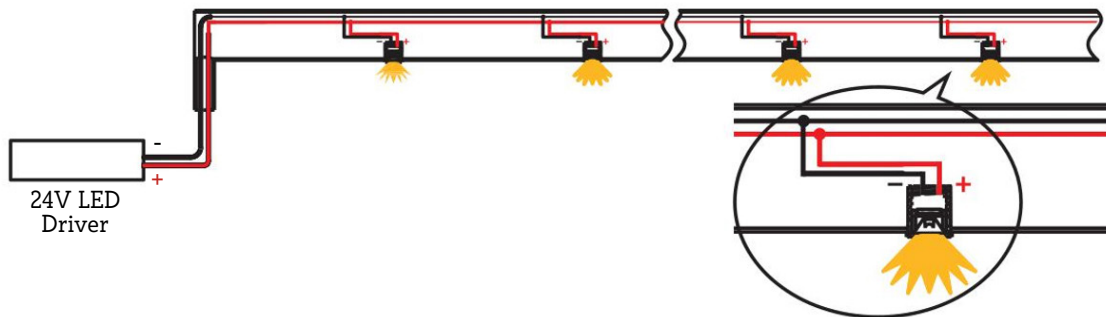
polar diagram:
A001223 - LG201 - 40x20° asym.

LUX GLENDER - SPOTS

LED Spot LG 20x1



Hole saw, suitable for handrail thickness <3mm, 300-700 rpm can be used no more than 20 times



LUX GLENDER - SPOTS

LED Spot LG 25 RGB/RGBW/DMX sym/asym

LED Spot LG 25 RGB/RGBW/DMX sym/asym

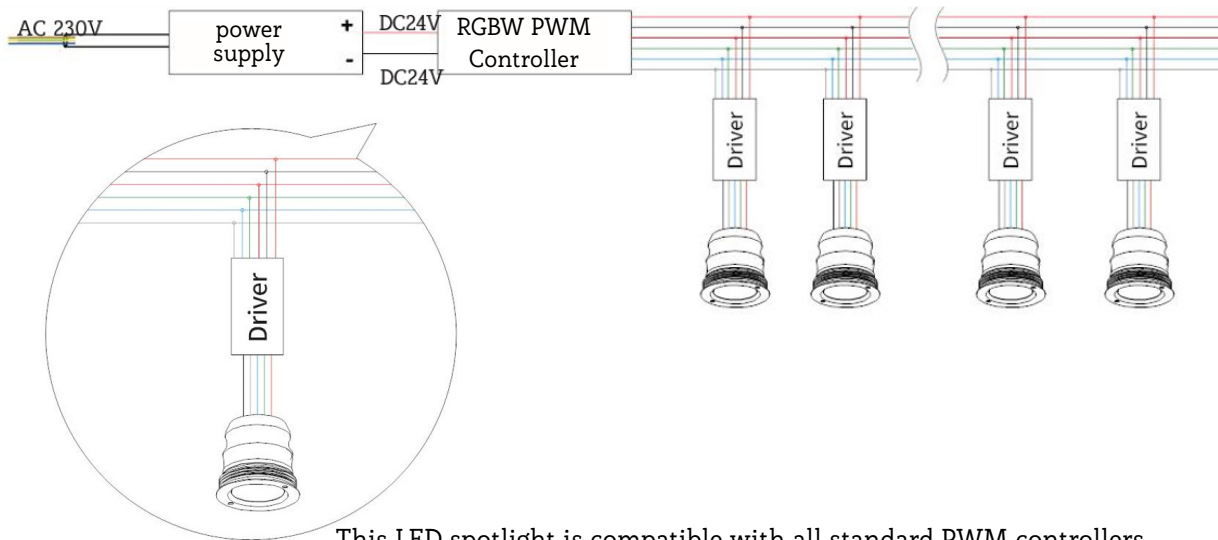
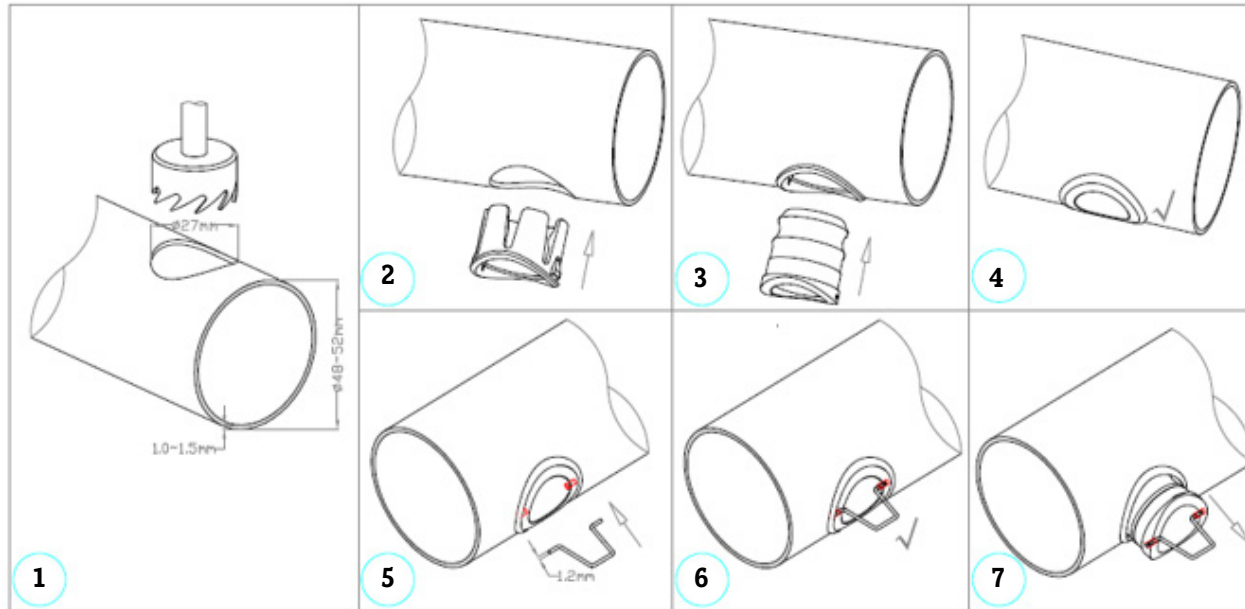
Material:	1.4401/04 - V4A
Dimensions:	Ø29 x H30,5mm
Hole in tube:	Ø 27mm
Voltage:	24 VDC
Light color / control:	project-specific
Protection rating:	IP 67
Beam angle:	A001224 - symmetrical or asymmetrical options available
Cable:	200 mm cable RGB/RGBW/DMX512

For handrail:	Ø 48,3 - 63 mm
Required wall thickness:	1,0 - 1,5 mm
Hole diameter:	Ø 27 mm



LUX GLENDER - SPOTS

LED Spot LG 25



This LED spotlight is compatible with all standard PWM controllers.

LUX GLENDER GmbH
Schreinerstraße 6/1
73257 Köngen

+49 7024 - 40 59 530
lux-glender.com
info@lux-glender.com

Technical modifications are subject to reservation.
05-2024