

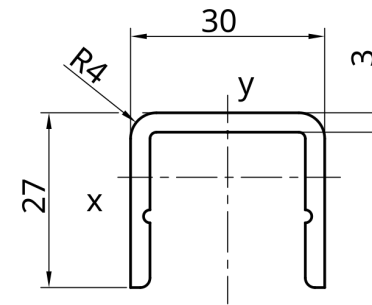
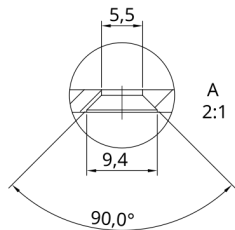
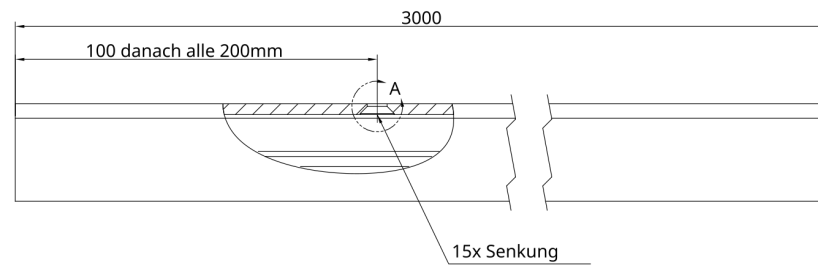
# LUX GLENDER Alu-WOOD-Profil

Abmessungen	
Außenabmessung	30 x 27 mm
Wanddicke	3 mm
Nut B x T	24 x 24 mm
Lieferlänge	3010 mm
Senkung	alle 200mm

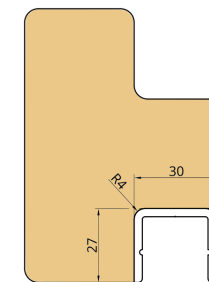
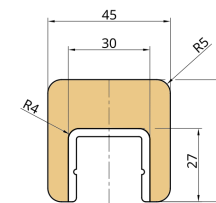
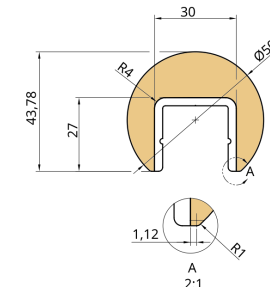
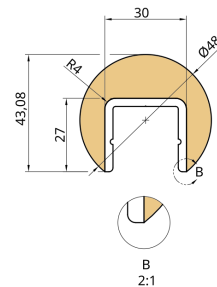
Artikelnummer	Werkstoff	Oberfläche	Gewicht
A000019	EN-AW6060	natur	0,580 kg/m

## Widerstands- und Flächenmomente

$W_x$	$W_y$	$I_x$	$I_y$
0,9 cm <sup>3</sup>	1,89 cm <sup>3</sup>	1,58 cm <sup>4</sup>	2,97 cm <sup>4</sup>



Ideal für Holzhandläufe für Treppen, Stege, Balkone und Brücken



Handlauf- und Einbaubeispiele, Lieferung ohne Holz